

Natural changes of population 1961 – 2022

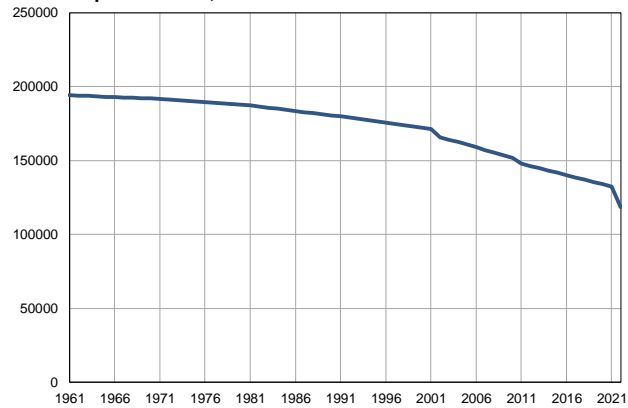
Profile
July 2023

North Banat

	1961	2022
Population size	194150	118421
Livebirths, Number	3234	1020
Deaths, Number	1919	2490
Natural increase, Number	1315	-1470
Infants deaths, Number	203	4
Livebirths, per 1,000 population	17	9
Deaths, per 1,000 population	10	21
Natural increase, per 1,000 population	7	-12
Infants deaths, per 1,000 livebirths	63	4

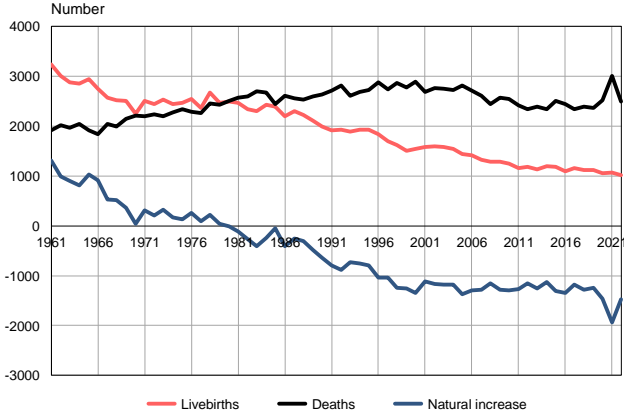
Source: Vital Statistics, SORS

Population size, 1961–2022



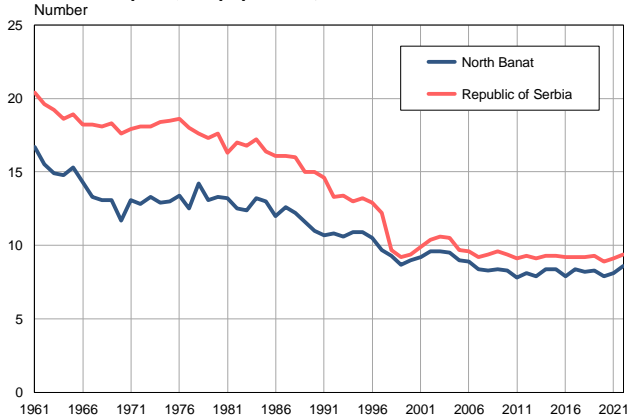
Source: Vital Statistics, SORS

Livebirths, deaths and natural increase, 1961–2022



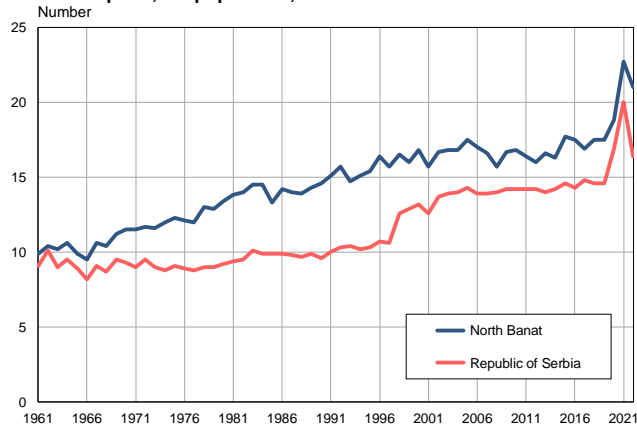
Source: Vital Statistics, SORS

Livebirths per 1,000 population, 1961–2022



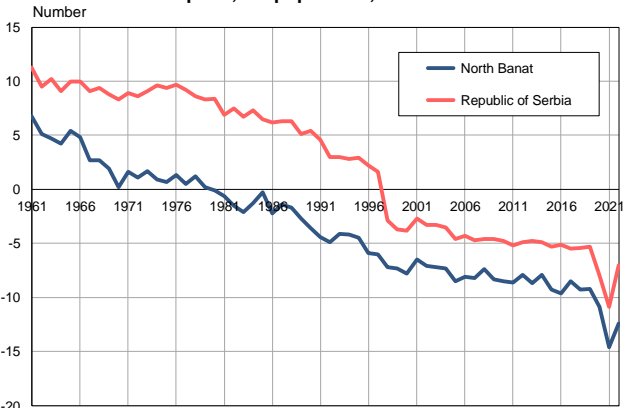
Source: Vital Statistics, SORS

Deaths per 1,000 population, 1961–2022



Source: Vital Statistics, SORS

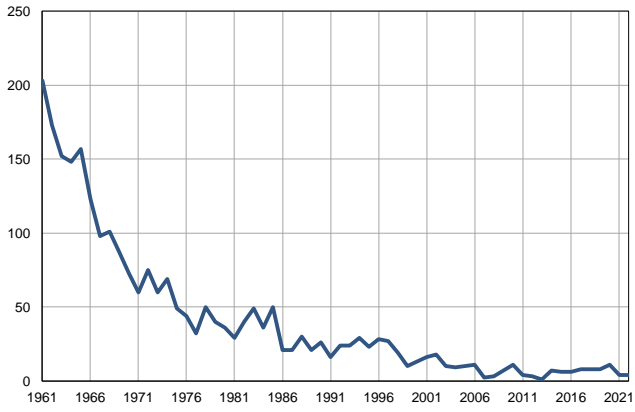
Natural increase per 1,000 population, 1961–2022



Source: Vital Statistics, SORS

Infants deaths, 1961–2022

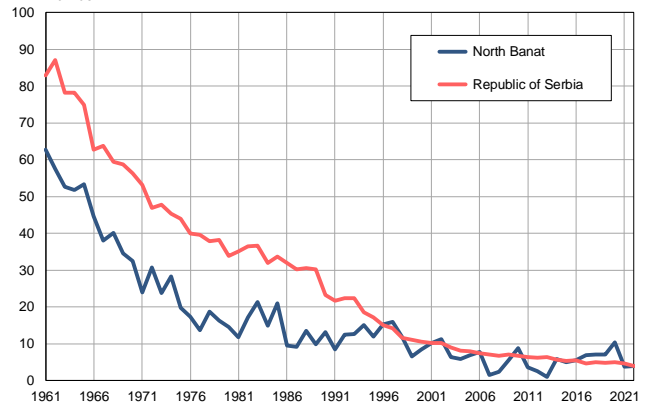
Number



Source: Vital Statistics, SORS

Infants deaths per 1,000 livebirths, 1961–2022

Number



Source: Vital Statistics, SORS

Table. Natural changes of population, North Banat

Year	Number of population	Livebirths	Deaths	Natural increase	Infants deaths	per 1000 population			Infant deaths per 1000 livebirths
						Livebirths	Deaths	Natural increase	
1961	194150	3234	1919	1315	203	16.7	9.9	6.8	62.8
1962	193898	3006	2020	986	173	15.5	10.4	5.1	57.6
1963	193646	2882	1974	908	152	14.9	10.2	4.7	52.7
1964	193395	2855	2042	813	148	14.8	10.6	4.2	51.8
1965	193143	2946	1919	1027	157	15.3	9.9	5.4	53.3
1966	192891	2751	1836	915	123	14.3	9.5	4.8	44.7
1967	192639	2571	2046	525	98	13.3	10.6	2.7	38.1
1968	192387	2517	1995	522	101	13.1	10.4	2.7	40.1
1969	192136	2511	2144	367	87	13.1	11.2	1.9	34.6
1970	191884	2253	2208	45	73	11.7	11.5	0.2	32.4
1971	191632	2503	2198	305	60	13.1	11.5	1.6	24.0
1972	191187	2441	2237	204	75	12.8	11.7	1.1	30.7
1973	190741	2529	2205	324	60	13.3	11.6	1.7	23.7
1974	190296	2447	2278	169	69	12.9	12.0	0.9	28.2
1975	189851	2472	2335	137	49	13.0	12.3	0.7	19.8
1976	189406	2541	2284	257	44	13.4	12.1	1.3	17.3
1977	188960	2361	2269	92	32	12.5	12.0	0.5	13.6
1978	188515	2679	2452	227	50	14.2	13.0	1.2	18.7
1979	188070	2471	2435	36	40	13.1	12.9	0.2	16.2
1980	187624	2490	2505	-15	36	13.3	13.4	-0.1	14.5
1981	187179	2469	2577	-108	29	13.2	13.8	-0.6	11.7
1982	186439	2334	2602	-268	40	12.5	14.0	-1.5	17.1
1983	185700	2296	2701	-405	49	12.4	14.5	-2.1	21.3
1984	184960	2435	2679	-244	36	13.2	14.5	-1.3	14.8
1985	184221	2397	2443	-46	50	13.0	13.3	-0.3	20.9
1986	183481	2200	2613	-413	21	12.0	14.2	-2.2	9.5
1987	182741	2307	2557	-250	21	12.6	14.0	-1.4	9.1
1988	182002	2221	2529	-308	30	12.2	13.9	-1.7	13.5
1989	181262	2111	2601	-490	21	11.6	14.3	-2.7	9.9
1990	180523	1991	2633	-642	26	11.0	14.6	-3.6	13.1
1991	179783	1915	2713	-798	16	10.7	15.1	-4.4	8.4
1992	178926	1934	2815	-881	24	10.8	15.7	-4.9	12.4
1993	178070	1886	2613	-727	24	10.6	14.7	-4.1	12.7
1994	177213	1925	2684	-759	29	10.9	15.1	-4.2	15.1
1995	176357	1928	2723	-795	23	10.9	15.4	-4.5	11.9
1996	175500	1843	2885	-1042	28	10.5	16.4	-5.9	15.2
1997	174644	1701	2743	-1042	27	9.7	15.7	-6.0	15.9
1998	173788	1622	2861	-1239	19	9.3	16.5	-7.2	11.7
1999	172931	1510	2772	-1262	10	8.7	16.0	-7.3	6.6
2000	172074	1544	2888	-1344	13	9.0	16.8	-7.8	8.4
2001	171218	1578	2687	-1109	16	9.2	15.7	-6.5	10.1
2002	165513	1597	2768	-1171	18	9.6	16.7	-7.1	11.3
2003	164013	1581	2757	-1176	10	9.6	16.8	-7.2	6.3
2004	162435	1544	2725	-1181	9	9.5	16.8	-7.3	5.8
2005	160757	1440	2812	-1372	10	9.0	17.5	-8.5	6.9

Table. Natural changes of population, North Banat

Year	Number of population	Livebirths	Deaths	Natural increase	Infants deaths	per 1000 population			Infant deaths per 1000 livebirths
						Livebirths	Deaths	Natural increase	
2006	158984	1419	2708	-1289	11	8.9	17.0	-8.1	7.8
2007	157155	1320	2605	-1285	2	8.4	16.6	-8.2	1.5
2008	155387	1292	2447	-1155	3	8.3	15.7	-7.4	2.3
2009	153708	1285	2570	-1285	7	8.4	16.7	-8.3	5.4
2010	151982	1254	2548	-1294	11	8.3	16.8	-8.5	8.8
2011	147890	1156	2423	-1267	4	7.8	16.4	-8.6	3.5
2012	146274	1182	2338	-1156	3	8.1	16.0	-7.9	2.5
2013	144672	1137	2396	-1259	1	7.9	16.6	-8.7	0.9
2014	143144	1201	2334	-1133	7	8.4	16.3	-7.9	5.8
2015	141612	1190	2502	-1312	6	8.4	17.7	-9.3	5.0
2016	139940	1099	2444	-1345	6	7.9	17.5	-9.6	5.5
2017	138371	1158	2341	-1183	8	8.4	16.9	-8.5	6.9
2018	136918	1119	2394	-1275	8	8.2	17.5	-9.3	7.1
2019	135453	1119	2367	-1248	8	8.3	17.5	-9.2	7.1
2020	133934	1056	2523	-1467	11	7.9	18.8	-10.9	10.4
2021	132117	1069	3002	-1933	4	8.1	22.7	-14.6	3.7
2022	118421	1020	2490	-1470	4	8.6	21.0	-12.4	3.9

Source: Vital Statistics, SORS

Definitions

Population size

Number of population in the respective year. The data on the number of population in 1961, 1971, 1981 and 1991 are census data, while for the inter-census years the number of population was calculated as an average inter-census difference. From 2002 are given the population estimates that were calculated according to the census of population results and the annual statistics of natural mechanical population movements.

Livebirths

Absolute number of live births in the course of a year. Live born child means a child giving vital signs after birth (breathing, i.e. heartbeat), even for the shortest time, regardless the mother's pregnancy duration.

Deaths

Absolute number of deaths in the course of a year. Deceased is a person that whenever after having been born live, shows permanently stopped vital signs.

Natural increase

Natural population increase is the number of live births minus the number of deaths.

Infants deaths

Absolute number of infants deaths in the course of a year. Deceased infant is a child that after having been born live and before aged one year, shows permanently stopped vital signs.

Livebirths, per 1 000 population

Livebirths rate is the ratio of the number of live births and the population size in the respective year. The number of live births is divided by the population size and then multiplied by 1000.

Deaths, per 1 000 population

General mortality rate represents the ratio between the number of deaths and the population size in the respective year. The number of deaths is divided by population size and then multiplied by 1000.

Natural increase, per 1 000 population

Natural population increase rate is the difference between the number of live births and the number of deaths, in relation to the population size in the respective year.

Natural population increase rate = (number of live births - number of deaths) / population size * 1000

Infants deaths, per 1 000 livebirths

Infant mortality rate is the ratio of deceased children under 1 year of age and live births in the respective year. The mortality rate is expressed per 1000 live births.

Infant mortality rate = (number of deceased children under 1 year of age / number of live births) * 1000

Additional info:



Download all database data in Excel format:

[Data](#)



DevInfo profiles:

devinfo.stat.gov.rs/SerbiaProfileLauncher/?lang=en



DevInfo online database:

devinfo.stat.gov.rs/vitalna



For additional information or questions please contact:

devinfo@stat.gov.rs